



Soluciones GeoEspaciales

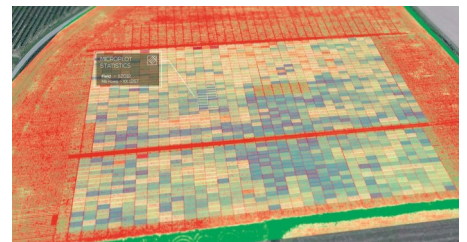
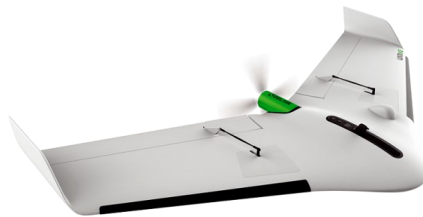
Introduction

Soluciones GeoEspaciales is a geotechnology company dedicated to obtaining and processing geo-based data to provide valuable information to end users.

We integrate the information gathered by various sensors mounted on satellite platforms and Unmanned Aerial Vehicles (UAVs, "drones"), and we process them with Artificial Intelligence (AI), Data Fusion and spatial data analysis tools.

We provide services of Non-Invasive Aerial Inspections, Aerial and Terrestrial Photogrammetry, Mapping and 3D Modeling and we show the data from a Geographical Perspective so that they are easily and quickly interpretable by users, directing the results to the information that is desired.

We provide interdisciplinary professional assistance throughout the workflow, from planning to the final product.



Soluciones GeoEspaciales

Office CABA

Junin 1140 - 5º "B"

1113 - Ciudad Autónoma de Buenos Aires
ARGENTINA

Office NOA

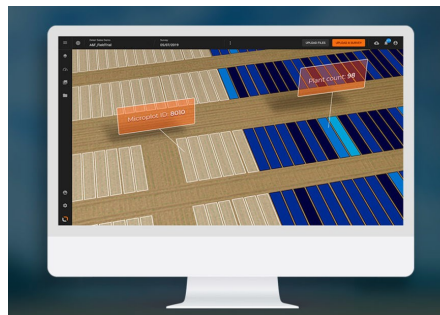
Mz. 29 Lt. 1 - Las Delicias

4607 - Los Alisos - Jujuy
ARGENTINA

Telephone: +54-388-407.5472

e-mail: info@soluciones-geoespaciales.com

www.soluciones-geoespaciales.com





Soluciones GeoEspaciales

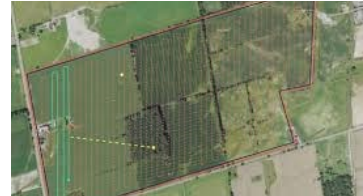
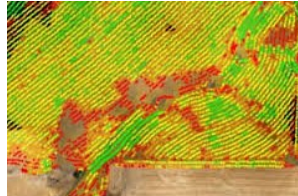
Agricultural Surveys

Combining the use of satellite images and mapping carried out with VANTs equipped with multispectral and hyperspectral cameras, it is possible to evaluate and monitor large agricultural areas.

The images are processed and displayed on a platform with a cartographic viewer that allows the interpretation of the surveyed data.

Some uses

- Contour Lines (DSM)
- Precision farming
- Analytics of Mappings and Vegetation Indices (NDVI, MCARI2, NDRE, VARI, PRI, CCCI, CIR, MSAVI2)
- Use of water and drainage routes
- Soil coverage
- Health assessment of crops
- Physiological analysis of the crop
- Plant counting



Soluciones GeoEspaciales

Office CABA

Junin 1140 - 5º "B"

1113 - Ciudad Autónoma de Buenos Aires
ARGENTINA

Office NOA

Mz. 29 Lt. 1 - Las Delicias

4607 - Los Alisos - Jujuy
ARGENTINA

Telephone: +54-388-407.5472

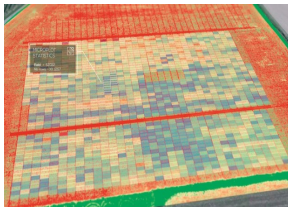
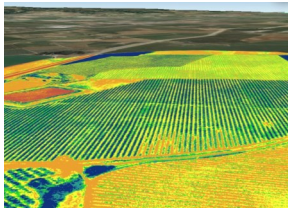
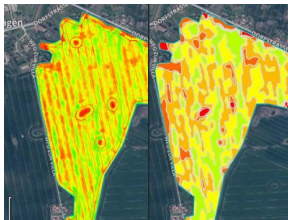
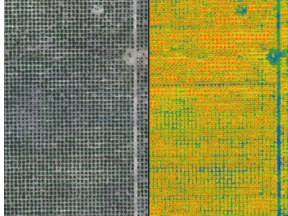
e-mail: info@soluciones-geoespaciales.com

www.soluciones-geoespaciales.com



Soluciones GeoEspaciales

Processing platform



Soluciones GeoEspaciales incorporates a platform that offers the power to improve the entire visual intelligence workflow, with image analysis, cloud processing and Artificial Intelligence technologies for advanced results and analysis.

Processing and Recoverable Information

- Vectorization of sub-areas of the field and identification as sub-plots
- Statistics by plot and sub-plots
- Plants height
- Characterization of the crop cycle
- Detailed inventory and control the status of assets to forecast their production
- Accounting for plantations
- Exploration maps
- Forest inventory

Precision farming:

- Weed and fertilizer control only where required
- Prescription Map of Weed Control and Fertilizer for Row Crops
- Information exportable to Selective Spray sprayers

Forest areas

- Forest stand mapping
- Growth monitoring
- Planted volume estimate

Soluciones GeoEspaciales

Office CABA

Junin 1140 - 5º "B"
1113 - Ciudad Autónoma de Buenos Aires
ARGENTINA

Office NOA

Mz. 29 Lt. 1 - Las Delicias
4607 - Los Alisos - Jujuy
ARGENTINA

Telephone: +54-388-407.5472
e-mail: info@soluciones-geoespaciales.com
www.soluciones-geoespaciales.com

5 Reasons to use UAVs in Agriculture



Soluciones GeoEspaciales

Office CABA

Junin 1140 - 5º "B"

1113 - Ciudad Autónoma de Buenos Aires
ARGENTINA

Office NOA

Mz. 29 Lt. 1 - Las Delicias

4607 - Los Alisos - Jujuy
ARGENTINA

Telephone: +54-388-407.5472

e-mail: info@soluciones-geoespaciales.com

www.soluciones-geoespaciales.com

1. Productivity increase

Drones are equipment that allows practical and fast and, therefore, it is possible to make periodic flights, following the entire development of the crop.

In this way, it is possible to make faster corrections, more assertive predictions, use the soil properly and explore the crop more safely.

2. Greater Gain

Faster, more accurate and consistent information is already a profit, but the benefits are not only there.

Financial gains also come from saving by specific and timely applications and avoiding spraying in trouble-free areas.

3. Integration with Agricultural Machinery

Information provided by **Soluciones GeoEspaciales** can be integrated with agricultural machinery, agricultural management software, and agricultural monitoring platforms.

Therefore, it is possible to have all the information about the crop in one place, which optimizes work and decision-making.

4. Decreased Field Time

With the use of drones, the work of gathering information in the field is optimized by up to 80%.

The results in quality of work done and savings in time and resources.

5. Information Accuracy

The time to decide the amount of inputs to be applied, planting or crop management can be done safely from the information obtained with the drones.

This is guaranteed because the accuracy of the captured images reaches 2cm/pixel.

Therefore, its action will not be based on sampling points, but on the real representation of the land, which will allow a critical analysis and an accurate diagnosis of the health of the vegetation, the failures in the sowing, the fertility problems and crop development.

Soluciones GeoEspaciales



Customers



Pucara S.A. Tierra Lejana

Siembras Argentinas



Soluciones GeoEspaciales

Office CABA

Junín 1140 - 5º "B"
1113 - Ciudad Autónoma de Buenos Aires
ARGENTINA

Office NOA

Mz. 29 Lt. 1 - Las Delicias
4607 - Los Alisos - Jujuy
ARGENTINA

Telephone: +54-388-407.5472
e-mail: info@soluciones-geoespaciales.com
www.soluciones-geoespaciales.com

